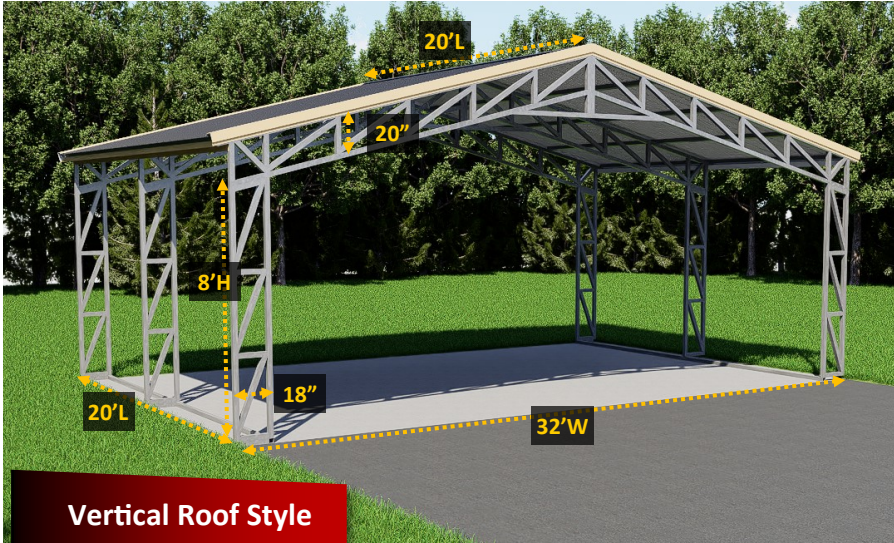


CLEAR SPAN 32'- 50'W

NON CERTIFIED



STATES: AR, OK, MO, NE, IL, IN, IA, KS, WI, WY, MI, CO , SD



Vertical Roof Style

LEG HEIGHT CHART

	20'L	25'L	30'L	35'L	40'L	45'L	50'L
9FT	\$750	\$1,100	\$1,450	\$1,800	\$2,150	\$2,500	\$2,850
10FT	\$1,050	\$1,400	\$1,750	\$2,100	\$2,450	\$2,800	\$3,150
11FT	\$1,350	\$1,700	\$2,050	\$2,400	\$2,750	\$3,100	\$3,450
12FT	\$1,650	\$2,000	\$2,350	\$2,700	\$3,050	\$3,400	\$3,750
13FT	\$1,950	\$2,300	\$2,650	\$3,000	\$3,350	\$3,700	\$4,050
14FT	\$2,250	\$2,600	\$2,950	\$3,300	\$3,650	\$4,000	\$4,350
15FT	\$2,550	\$2,900	\$3,250	\$3,600	\$3,950	\$4,300	\$4,650
16FT	\$2,850	\$3,200	\$3,550	\$3,900	\$4,250	\$4,600	\$4,950

CLOSE BOTH SIDES CHART (VERTICAL SIDING)

	20'L	25'L	30'L	35'L	40'L	45'L	50'L
8FT	\$1,458	\$1,746	\$2,052	\$2,376	\$2,718	\$3,060	\$3,402
9FT	\$1,692	\$1,998	\$2,322	\$2,664	\$3,024	\$3,438	\$3,852
10FT	\$1,926	\$2,250	\$2,592	\$2,952	\$3,330	\$3,816	\$4,302
11FT	\$2,160	\$2,502	\$2,862	\$3,240	\$3,636	\$4,194	\$4,752
12FT	\$2,394	\$2,754	\$3,132	\$3,528	\$3,942	\$4,572	\$5,202
13FT	\$2,628	\$3,006	\$3,402	\$3,816	\$4,248	\$4,950	\$5,652
14FT	\$2,862	\$3,258	\$3,672	\$4,104	\$4,554	\$5,328	\$6,102
15FT	\$3,096	\$3,510	\$3,942	\$4,392	\$4,986	\$5,832	\$6,678
16FT	\$3,330	\$3,762	\$4,212	\$4,680	\$5,166	\$6,084	\$7,002

REFLECTIVE INSULATION (BOTH SIDES) ADD ON:
 Multiply leg height by length by 2.
 EX. 21' long x 8' tall 8x20= 160 sf x 2 =320 sf x 2.50
 = \$800.00 both sides

CLOSE ONE END CHART (VERTICAL SIDING)

	32'W	34'W	36'W	38'W	40'W
8FT	\$3,350	\$3,550	\$3,750	\$3,950	\$4,150
9FT	\$3,640	\$3,840	\$4,040	\$4,240	\$4,440
10FT	\$3,930	\$4,130	\$4,330	\$4,530	\$4,730
11FT	\$4,220	\$4,420	\$4,620	\$4,820	\$5,020
12FT	\$4,510	\$4,760	\$5,010	\$5,260	\$5,510
13FT	\$4,800	\$5,050	\$5,300	\$5,550	\$5,800
14FT	\$5,090	\$5,340	\$5,590	\$5,840	\$6,090
15FT	\$5,380	\$5,680	\$5,980	\$6,280	\$6,580
16FT	\$5,670	\$5,970	\$6,270	\$6,570	\$6,870

REFLECTIVE INSULATION (PER END) ADD ON:
 Add 3' to leg height multiply by width
 EX. 32' wide x 8' tall 11x32= 352 sf x 2.50
 = \$880.00 per end

<u>32X20X8</u> \$10,800	<u>32X25X8</u> \$12,600	<u>32X30X8</u> \$14,400	<u>32X35X8</u> \$16,600	<u>32X40X8</u> \$18,800	<u>32X45X8</u> \$21,000	<u>32X50X8</u> \$23,200
<u>34X20X8</u> \$12,200	<u>34X25X8</u> \$14,000	<u>34X30X8</u> \$15,800	<u>34X35X8</u> \$18,000	<u>34X40X8</u> \$20,200	<u>34X45X8</u> \$22,400	<u>34X50X8</u> \$24,600
<u>36X20X8</u> \$13,600	<u>36X25X8</u> \$15,400	<u>36X30X8</u> \$17,200	<u>36X35X8</u> \$19,400	<u>36X40X8</u> \$21,600	<u>36X45X8</u> \$23,800	<u>36X50X8</u> \$26,000
<u>38X20X8</u> \$15,000	<u>38X25X8</u> \$16,800	<u>38X30X8</u> \$18,600	<u>38X35X8</u> \$20,800	<u>38X40X8</u> \$23,000	<u>38X45X8</u> \$25,200	<u>38X50X8</u> \$27,400
<u>40X20X8</u> \$16,400	<u>40X25X8</u> \$18,200	<u>40X30X8</u> \$20,000	<u>40X35X8</u> \$22,200	<u>40X40X8</u> \$24,400	<u>40X45X8</u> \$26,600	<u>40X50X8</u> \$28,800

NOTE: BASE RAIL FRAME LENGTH'S ARE 20', 25', 30' ETC.

VERTICAL ROOF HAS NO OVERHANG ON FRONT OR BACK JUST ON SIDE EAVES.

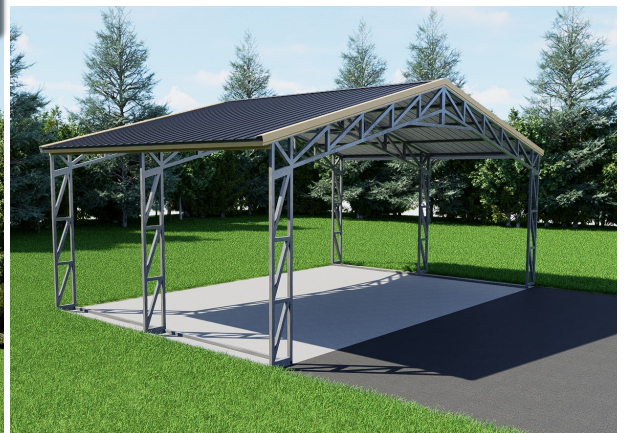
REFLECTIVE INSULATION ADD ON ROOF ONLY: Add 2' to width and multiply by length.
 EX. 32' wide x 20' long (34x20=680 sf x 2.50 = \$1,700)

STANDARD FEATURES:

12 Gauge frame, 8ft std leg height, 29 gauge roofing, maximum rafter spacing 10' on center or less depending on the length, zigzag truss design, fully open.



All sizes must be installed on a concrete surface.
 Customer must supply lull lift for all buildings sizes.



- Free Installation On Your Level Lot
- Engineer Plans Available Call 877-494-2997
- Financing Available / Rent To Own Available
- Rebar Anchors Included /Concrete Anchors Included

2024 V3

"ALL PRICES SUBJECT TO CHANGE WITHOUT NOTICE"

©2024 Copyright All Rights Reserved Tri State Carports, Inc

CLEAR SPAN 32'-40' WIDE OPTIONS



Image shown:
with vertical siding

***30 Day Workmanship warranty** on all Buildings, effective day of Installation.
***20 Year limited warranty** on 12 Gauge framing materials assuming regular care and maintenance given to building.

We strongly recommend you to purchase vertical roofs on buildings 31ft or longer to prevent leaks.

Labor Fees	20'L	25'L	30'L	35'L	40'L	45'L	50'L
Build over fee	\$350	\$400	\$450	\$500	\$550	\$600	\$650
Cut leg fee	HEIGHT CAN'T BE CUT ON SITE MAKE SURE TO HAVE EXACT MEASUREMENTS SENT TO US BEFORE INSTALL. \$750.00 CHARGE TO RECUT AT SHOP.						

Add \$100.00 Trip Fee on any purchase less than \$500.00

Connection fees valid only if you are purchasing 2 buildings at the same time (not on existing buildings)

Connecting end to end. \$300.00
Connecting side to side. \$200.00

CONCRETE DIMENSIONS

In reference to frame size

Ex. 32'Wx20'L building frame size. Make pad 32'8"Wx20'8"L.

Make the extra 4" all around slope away from the building edge to run off water.

ROOF REFLECTIVE INSULATION ADD ON:

Add 2' to width and multiply by length. EX. 32' wide x 20' long
(34x20= 680 sf x rate = \$ 1,700.00) R Value 14.7 **\$2.50 SF**
95% Reflectivity Helps reduce building condensation

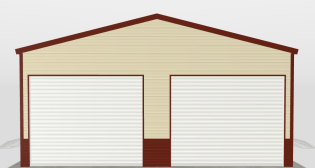
EXTRA FRAME BOW 32'-36' WIDE \$1,152 EA. 38'-40' WIDE \$1,296 EA. ADD \$10.00 FOR EACH ADDITIONAL HEIGHT.			GARAGE DOORS 6'WX6'H \$704.00 EA. 8'WX7'H \$848.00 EA. 9'WX7'H \$920.00 EA. 10'WX8'H \$992.00 EA. 10'WX10'H \$1,064.00 EA. 12'WX12'H \$2,304.00 EA. ADD \$100.00 SIDE DOOR FEE (PER EACH DOOR) <u>BUILDING MUST BE 1' TALLER TO INSTALL DOOR ON SIDE.</u>		*GABLE END 12'-20' WIDE \$720.00 EA. 22'-24' WIDE \$864.00 EA. VERTICAL SIDING **EXTENDED GABLE 32'-36' WIDE \$1,152.00 EA. 38'-40' WIDE \$1,296.00 EA. **GABLE PLUS 3' PANEL VERTICAL SIDING
MOBILE HOME ANCHORS 3/4"X30" \$30.00 EA.	ASPHALT ANCHORS 3/4"X30" \$30.00 EA.		WINDOWS white with grids 24"X36" \$190.00 EA.	ELECTRIC DOOR OPENER \$950.00 EACH RECOMMENDED 10-12' TALL ON CONCRETE OR GROUND.	
WALK IN DOOR left outswing 36"X80" \$515.00 EA. ADD \$50.00 SIDE FEE (IF FRAME HEADER BAR IS NEEDED ADD \$100) <u>BUILDING MUST BE A MIN OF 7FT TALL TO INSTALL DOOR ON SIDE.</u>		EXTRA PANELS 36" wide 21' LONG \$130.00 EA. *36' LONG \$216.00 EA. 26' LONG \$158.00 EA. *41' LONG \$259.00 EA. 31' LONG \$187.00 EA. *NOT A CONTINUOUS PANEL.			
EXTRA L TRIM \$1.25 (PER FT)	EXTRA J TRIM \$1.12 (PER FT)	45° TRIM KIT \$99.00 EA. MUST CLOSE END OR SIDE FIRST.		EXTRA SUPPORTS \$100.00 EACH	

FRAME OUTS

GABLE END

EXTENDED GABLE END

GARAGE DOORS



FRAME OUTS WINDOW \$80.00 EACH WALK DOOR \$90.00 EACH	DOOR FRAME OUTS 6'W-12'W ON END \$200.00 EACH 13'W-16'W ON END \$400.00 EACH	6'W-12'W ON SIDE \$600.00 EACH 13'W-16'W ON SIDE \$900.00 EACH	ON ENDS: MUST CLOSE FIRST FOR FRAME OUTS, IF NO PANELS WANTED ON END (FRAME END ONLY) <u>DISCOUNT 20% FROM CLOSED END PRICE.</u>



2 Under Ground